



# The Messenger

First United Methodist Church of Twin Falls 360 Shoshone St E, Twin Falls, ID 83301  
(208)733-5872 tffumc@gmail.com www.tffumc.com

Pastor, the Reverend Philip J. Airhart

## January 2012

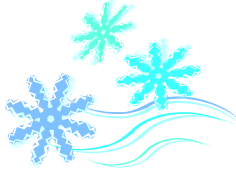
### Sunday Worship

Sunday School 9:00 a.m.

Worship 10:00 a.m.

Fellowship 11:15 a.m.

Nursery Care Available  
Handicapped Accessible / Elevator



### Ministry Contacts & Staff

Lay Leader Ron J.  
Church Administrator  
Etha C.

Accompanist/Organist  
Brenda M.

Nursery Attendants  
Ashlee B.  
Christina M.

Sound Technician  
Greg P.

Communicator  
Eleanore B.

Coordinator of Christian Ed.  
Cathy P.

Trustee Chair

Finance Chair Phil G.

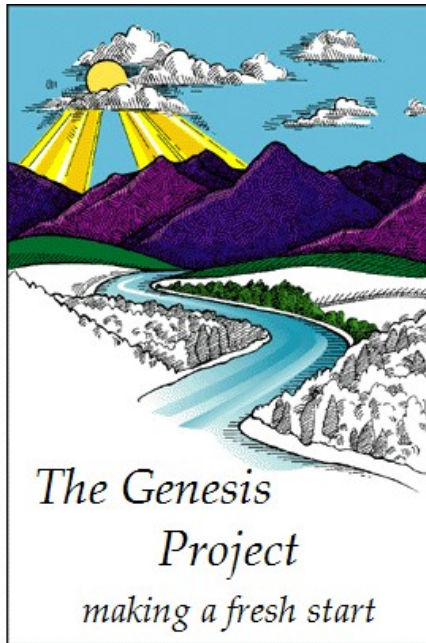
Staff Pastor Parish Relations Chair  
Bob P.

Welcoming Carol J.  
Altar Guild Lou S.  
Joyce G.

Outreach John and Colleen T.

Miriam's Circle Pat H.  
Ruth's Circle Doris R.

Scouting Sharon B.



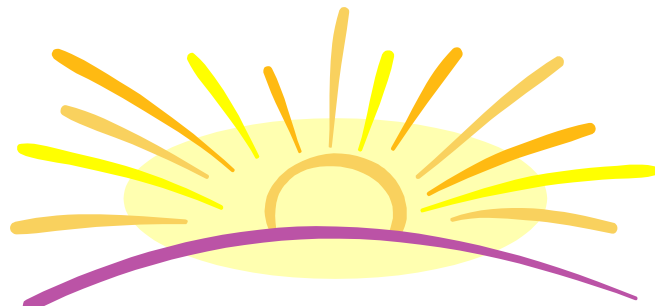
*Join us for a New Year  
Sermon Series*

*Beginning*

*January 8, 2012*

*Make a Fresh Start by:*

- *Finding Our Place in Creation*
- *Building Boats that will Float*
- *Listening to the Questions of a Child*
- *Finding Answers to Family Feuds*
- *Climbing the Right Ladder*
- *Wrestling Alone at Night*



*New Year's Day*

## Brunch

### After Worship

**Celebrate 2012 with your church family! Breakfast casseroles and fruit will be served in the Fireside room.**

# Message from Pastor Phil

## The Gate of the Year

"I said to the man who stood at the gate of the year 'Give me a light that I may tread safely into the unknown.' And he replied, 'Go into the darkness and put your hand into the hand of God. That shall be to you better than light and safer than a known way!"

So begins the poem by Minnie Louise Haskins, written in 1908 while she was serving as a guest lecturer at the London School of Economics. The poem might have remained in relative obscurity except for the fact that it happened to be a favorite of the late Queen Mother Elizabeth, wife of England's King George VI (yes – the King featured in the movie, *The King's Speech!*). The King was searching for a way to conclude his annual Christmas Message to the British Empire on Christmas Day, 1939. World War II had started in September of that year, and it was a dark and foreboding time for Europe – it would be two years yet before America entered the war. How could the King leave his people with some sense of hope in such a hopeless time? Queen Elizabeth, sensing her husband's frustration, showed him this poem and suggested he use it in his address. The King did so, and the words of Haskins' poem became a source of hope and inspiration, not only for that generation, but for all who have read it in the succeeding years.

Today we stand at "the gate of the year" 2012. None of us knows what this year will bring, either for good or for ill. If we listen to all of the contradictory punditry put forward by the political and financial prognosticators clamoring for our attention in the popular media, we might be tempted to face this year with a sense of apprehension and frustration – if not downright dread, rather than optimism and joy. If, on the other hand, we will but put our hands into the hand of God, we know it will indeed be "better than light and safer than a known way."

To a world groping for a path through the darkness, the gospel writer, John, declares "that the light still shines in the darkness, and the darkness has never been able to put it out!" May our prayer for 2012 be, in the words of that much-loved chorus, "Shine, Jesus, Shine! Shine on me!"

Laurie joins me in expressing to you, our church family, our heartfelt gratitude and appreciation for all your kindness and generosity to us throughout this beautiful season. We love and appreciate each one of you, and we pray for you a year of God's blessing in 2012!

In Christ's love – and mine,

## Financial Information Session

For members of

The Board of Trustees, the Staff Pastor Parish Relations Committee,  
the Finance Committee, the Leadership Team  
and any church member who is interested.

January 31, 2012 at 7 p.m.

Fireside Room

Learn about:

Our various sources of funds

How these funds are managed

Our 2012 budget

What committee has responsibility for each fund & budget

# Christian Education



**Sunday School  
begins  
January 8th  
at 9 a.m.**

**B.I.G. Theme:** Stories About Jesus  
**B.I.G. Idea:** We believe that the stories about Jesus help us understand that Jesus is the Son of God.

The children will learn about Jesus in the Temple, Jesus' baptism, Jesus beginning his ministry, and Jesus healing Peter's mother-in-law.

# go camping

## Church Camp Registration Open for 2012

Registration is now open for 2012 Church Camps in all areas of our conference. Information can be found on the camping website, [www.gocamping.org](http://www.gocamping.org). Camps are available for all ages and many interests. Scholarships are available for church camp and applications can be requested from the church office.

## CLD – Leadership Development

### The Healthy Vital Church Initiative and what is TFFUMC doing with it?

Several people are participating in the TFFUMC CLD group by reading one or more of the study books. We have met to discuss the first book and will gather on January 4th at 7 p.m. to discuss *I Refuse to Lead a Dying Church.* Anyone who is interested in the revitalization of our church is invited to be part of this program.

The books we will be sharing are:  
*Recreating the Church* by Richard L. Hamm  
*I Refuse to Lead a Dying Church* by Paul Nixon

*Simple Church* by Rainer and Geiger  
*Change the World* by Michael Slaughter  
*Unbinding the Gospel* by Martha Grace Reese  
*Winning on Purpose* by John Edmund Kaiser

Six people are attending the regional monthly gathering led by Assistant to the Bishop, Kim Fields and Rev. Gary Ross.

## Raise Your Voice – Spiritual Retreat

The Episcopal Diocese of Idaho has invited us to participate in the 2012 Bishop's Retreat. Join Bishop Brian Thom and musician Ana Hernandez the weekend of January 15 - 17 for music, spiritual retreat and wonderful fellowship. The retreat will be at the Monastery of the Ascension in Jerome. Everyone from shower singers to active choir members are welcome and encouraged to attend this wonderful event. Registration fee for this event is \$140 for double occupancy or \$150 for single occupancy. Register online at [www.episcopalidaho.org](http://www.episcopalidaho.org) or call (208)345-4440.

Ana Hernandez is an author and a composer, arranger, and performer of sacred music. She is a member of the recording group HARC. For more than a decade, she has conducted workshops that encourage people to explore the effects of rhythm and chant on their bodies.



# Mission Opportunities

## Human Relations Day - Jan. 15th Special Offering

### Let's Get Radical: Think Justice

Radical means “from the root or foundation.” That is how Jesus changed lives and how we, his followers, are called to change the world.

Being in ministry with the poor requires a radical or fundamental approach to overcoming not just the consequences but also the causes of poverty. It's a matter of justice.

Your *Human Relations Day* offering supports vital community ministries that teach and advocate for justice, especially among people struggling to survive in the margins of society.

For example, students at United Methodist-related Philander Smith College in Little Rock, Ark., are becoming more involved in social concerns with help from the United Methodist Voluntary Service program. Combining academics with activism, the tiny, historically black college — with “Think Justice” as its motto — is teaching students to pursue justice for a better world.

During one Thanksgiving week students explored and responded to the worsening plight of hunger and homelessness in central Arkansas. They hosted a Faces of the Homeless symposium, volunteered at a shelter and soup kitchen, slept in cardboard boxes outdoors overnight and collected food and clothing for 100 needy families.

Other lessons have come from a letter-writing campaign to lobby for tougher drunk-driving laws and public forums with consciousness-raising guest speakers.

Your gifts to *Human Relations Day* provide avenues to restored relationships through ministries like Youth Offender Rehabilitation, Community Developers self-improvement programs and United Methodist Voluntary Services community advocacy programs. It's time to think and support justice, to become radical in changing lives and changing the world. Please give generously.

To read additional stories of lives changed by your gifts to the *Human Relations Day Sunday offering* go to [www.umcgiving.org](http://www.umcgiving.org) and click on the tab marked *church wide special Sundays*.



**FOOD DRIVE**

## Food Drive - January 8th Support Safe Harbor

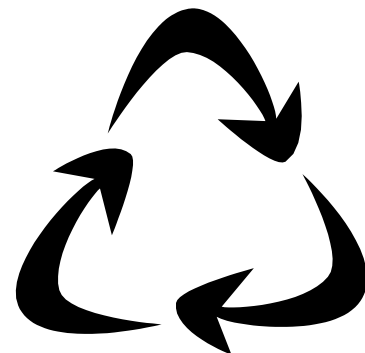
Each month we collect food for one of six Twin Falls service providers. You can support this effort by bringing a bag of groceries on the first Sunday of the month.

In December we took 37 bags to the Salvation Army.

## Your Help is Needed

The funeral dinner ministry needs plastic containers with lids and foil pie tins for leftovers. If you have a good container and don't want to throw it out, we would like to help you put it to good use. The church could purchase containers but free is always better and reusing is good stewardship of the earth.

If you bring containers, please put them in the kitchen cupboard marked “containers for leftovers.”



**First United Methodist Church**  
**360 Shoshone Street East**  
**Twin Falls, Idaho 83301**

### Upcoming Events...

New Year's Day Worship & Brunch	Jan. 1
CLD - Twin Falls Group	Jan. 4
New Sermon Series	Jan. 8
Human Relations Day	Jan. 15
Living Well in Idaho	Jan. 31
Financial Information & Training	Jan. 31
Boy Scout Sunday & Breakfast	Feb. 12



## TWIN FALLS FIRST United Methodist Church



**For a complete calendar and current ministry information** see our church web site.  
[www.tffumc.com](http://www.tffumc.com)

**“Like” us on Facebook.** Like us and check out our events. Share us with your friends.

**Receive “The Messenger” via email.** If you wish to receive the monthly newsletter via email please advise the church office of your email address.

**Church Office Hours** are 9 a.m. to 12 noon Monday through Friday. Church staff will be working other hours as needed to complete administrative tasks. Please leave a message if your call is not answered. The staff will return calls as soon as possible